

# **Tamaki Transformation Programme**

---

## **Outcomes framework for the evaluation**

**Authors: Patricia Laing, Justine O'Reilly, Chris Ou,  
Lana Perese, Kathryn Scott, Ma'anaima Soa-Lafoa'i  
and Luke Smith**

**May 2010**

This report was prepared by Patricia Laing, Justine O'Reilly, Chris Ou, Lana Perese, Kathryn Scott, Ma'anaima Soa-Lafoa'i and Luke Smith

**Contact for further details:**

Dr Patricia Laing, Senior Analyst, Research, Evaluation and Data Analysis, Housing New Zealand Corporation  
DDI 04-4393141

# Contents

<b>Introduction .....</b>	<b>4</b>
<b>Why have an outcomes framework? .....</b>	<b>5</b>
<b>Using the outcomes framework .....</b>	<b>9</b>
<b>Representing the outcomes framework diagrammatically .....</b>	<b>10</b>
<b>Source documents for the programme outcomes .....</b>	<b>17</b>
<b>Appendix 1 Programme outcomes areas by data source, availability and gaps .....</b>	<b>18</b>

# Introduction

- 1 The evaluation of the Tamaki Transformation Programme (TTP) is concerned with short term and long term results. In the long term the evaluation will be concerned with measuring the extent to which outcomes achieved for the Tamaki community can be attributed to TTP activities. In the short term the aims are to:
  - provide evidence of Programme successes which are meaningful, credible and used by key stakeholders (Tamaki residents, the Programme Board, community stakeholders, partner agencies and decision makers)
  - identify barriers which prevent Programme activity from making progress towards achieving outcomes so timely action can be taken
  - contribute to a body of knowledge on what works, to help inform future endeavours
  - ensure the community considers the evaluation independent and able to engage with and influence the Programme for positive change and increased effectiveness in implementation
  - ensure the community feels that they are effective partners in the evaluation.
- 2 The key objectives of the design phase of the evaluation are to:
  - a) capture organisational knowledge and lessons learnt from the Programme activities over the last two years, with an emphasis on interagency work
  - b) develop processes and practices that build the evaluation capacity and experience of people in Tamaki
  - c) develop a framework that enables co-design and co-delivery of the evaluation with the Tamaki community
  - d) develop and agree a range of indicators and measures that can help track progress towards achieving TTP outcomes
  - e) identify what contributes to similar programmes' success and review the match of these 'success factors' with the operation of the TTP to date.
- 3 This outcomes framework is a living document focused on evaluating TTP's progress at different points in the Programme's implementation. The expectation is that it will be refined as TTP progresses.
- 4 The outcomes framework has been prepared based on the work that has been undertaken to fulfil the key objectives listed above in paragraph two. The evaluation team has read and discussed TTP documents that contribute to the paper, *Tamaki Transformation Programme: Organisational knowledge and lessons learnt (1 June 2007 - 1 October 2009)*. These papers, previous evaluations undertaken by Housing New Zealand, and the experience of the evaluation team assisted with the identification of the data sources that are available and could be used as indicators. Reference was made to other evaluation frameworks. TTPs foundation framework and workstream documents were studied.
- 5 Early drafts were discussed with TTP workstream leaders and "community champions" to clarify the inclusion of some indicators, and to identify possible data gaps. In the discussions with the "community champions" and community groups, it

was an indicated that the outcomes framework was a technical document that would describe Tamaki using measurements acceptable to Government. The community, however, had other ways to describe the local community and place. Evaluation processes, other than measuring the indicators in the outcomes framework, would be needed to describe community perspectives.

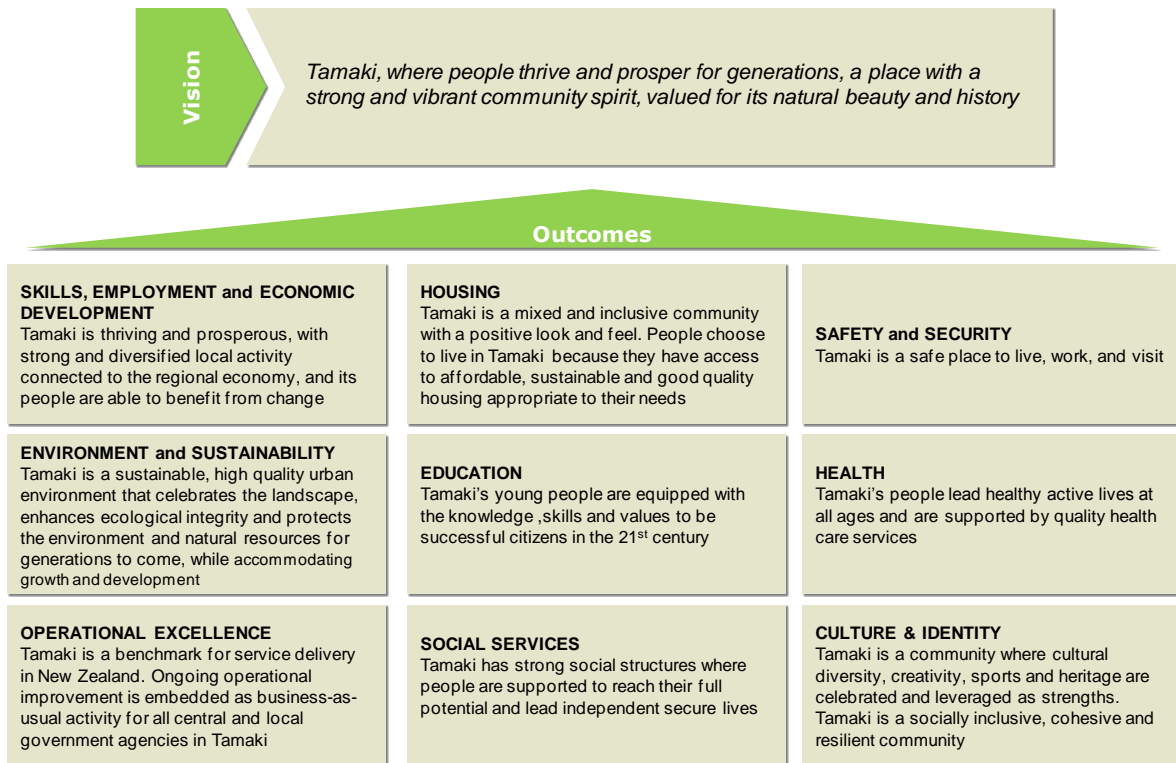
## **Why have an outcomes framework?**

- 6 The outcomes framework shows the possible links between what TTP is seeking to achieve by implementing selected activities and the indicators that are potentially available to measure these achievements. It provides a baseline which can be used to discuss the priority given to different outcomes as the implementation of TTP progresses. The scope of the evaluation is specified in relationship to the outcomes framework.
- 7 TTP is a complex programme which includes a number of initiatives that contribute to the partial fulfilment of outcomes. These initiatives have their own evaluations, for instance, evaluations of educational readiness, development of health workforce capacity, and the cost benefit analysis of the economic impact of TTP. Although the evaluations are limited to specific areas of interest, the knowledge which they generate needs to contribute to a wider TTP picture which potentially is described by the outcomes framework. These area specific evaluations can then contribute in a coherent way to the process and outcomes evaluation of TTP.
- 8 The construction of the outcomes framework assisted with identifying data about areas that were not included in the Community Profile (October 2007) but that would need to be included in an evaluation of TTP. For instance, neighbourhoods will be significantly changed by the implementation of TTP yet no data was available to describe the neighbourhood prior to the implementation of changes. The walkability and accessibility of neighbourhood destinations are two indices that will provide some baseline data to fill this gap. The quality of the neighbourhood is another area where baseline data is needed. A survey of the condition of houses owned by Housing New Zealand, private landlords and owner occupiers would also provide robust baseline information.

### **The outcomes framework**

- 9 Nine high level outcomes areas were identified in the Value Proposition (see Figure 1).

**Figure 1** The nine high-level outcome areas that contribute the Programme's vision



10 TTP developed a Two Year Foundational Framework that translated these nine outcome areas into the following five programme outcomes (see Appendix 2):

- Transforming housing - Mixed Tenure housing renewal and modernisation underway
- Transforming for families to be healthy, confident and active in determining their own future
- Transforming Education - Lift literacy achievement levels in Tamaki schools
- To prepare a Place Making package that encapsulates the Tamaki Vision
- Open up sustainable job/training opportunities for Tamaki residents.

**Table 1** Programme outcomes: Two Year Foundational Framework and TTP evaluation

<b>Two Year Foundational Framework</b>	<b>TTP Evaluation</b>
Transforming housing - Mixed Tenure housing renewal and modernisation underway	Transforming housing, neighbourhood and the environment
No equivalent	Creating a safe, secure and connected community
Transforming for families to be healthy, confident and active in determining their own future	Transforming families to be healthy, confident and active in determining their own future
Transforming education - Lift literacy achievement levels in Tamaki schools	Transforming education
To prepare a Place Making package that encapsulates the Tamaki Vision	No equivalent, 'place' as 'neighbourhood' and 'environment' have been included under transforming housing
Open up sustainable job/training opportunities for Tamaki residents	Open up sustainable job/training opportunities

- 11 The evaluation team refined the five programme outcomes identified in the Two Year Foundational Framework in consultation with the TTP Programme Director. The proposed changes were based on analysis of TTP supporting documents, the data available to measure indicators, and conversations with workstream leaders and TTP staff.
- 12 The programme outcomes for the evaluation are designed to recognise the interactions between the different outcomes sought. They are also designed with attribution in mind. There are many interventions occurring in Tamaki at any given time and the evaluation needs a process that will provide some means of attributing TTP's contributions to outcomes achieved.
- 13 The outcomes framework for the evaluation provides a summary of indicators and measures that are reliable, practical and provide reasonable coverage of the potential scope of TTP activities. In scope for the evaluation are the programme outcomes that were identified by TTP and revised slightly for the evaluation.
- 14 Out of scope for the evaluation is TTP's vision that 'Tamaki is a place where people thrive and prosper for generations, a place with a strong and vibrant community spirit, valued for its natural beauty and history'. Also out of scope for the evaluation are the long term outcomes for Tamaki which include:
  - A healthy, attractive mixed urban environment that builds upon Tamaki's diversity and heritage
  - A confident and creative community that generations love to call home
  - People who enjoy great social, health and economic outcomes and can access all the opportunities Auckland has to offer
  - A place of opportunity, enterprise and a prosperous economy.
- 15 The scope of the evaluation excludes contextual information that is beyond the ability of TTP to influence but which may still have an impact on TTP's ability to

achieve its agreed outcomes. Population trends are an example of such a contextual factor.

## **Indicators**

- 16 In order to select indicators to measure programme outcomes at any given point in the implementation of TTP it was useful to identify three kinds of information: existing administrative data, relevant research and information about the perceptions of Tamaki residents.
- 17 The experiences Tamaki people have of TTP are central to the Programme's success. The 'on the ground' reality for Tamaki residence have been expressed as indicators for the purposes of the outcomes framework. They are:
- Increased awareness and use of primary healthcare services
  - Reductions in potentially avoidable hospitalisations
  - Increased pride and engagement with the community
  - Reduced crime and fear of crime
  - Increased employment leading to higher incomes
  - Increased focus on careers and employment among young people
  - Increased participation in early childhood services and schools
  - Increased educational achievement
  - Houses are affordable and meet the needs of families
  - Improved accessibility and quality of amenities and public spaces.

## **'On the ground' reality for Tamaki residents**

- 18 In the process of identifying possible indicators consideration was given to: the availability and quality of the data; and, the comparability of the data within the Auckland Region, nationally and internationally. It was recognised that this type of information is sometimes at odds with how communities work on the ground.
- 19 How communities work on the ground is knowledge that is often complementary to other information sets. To capture this complementary information the plan is to fulfil a key objective of the evaluation, and develop processes and practices that build the evaluation capacity and experience of people in Tamaki.

## **Contributing factors**

- 20 Three contributing factors have been identified that are in-scope for the evaluation because they influence TTP's ability to achieve agreed outcomes successfully. These are:
- Service provision - the quality, appropriateness and accessibility of services provided to people in Tamaki
  - Self-determination and participation - the ability of people to participate in TTP activities and to determine their own futures consistent with their cultural backgrounds and expectations



- Economy - The ability of people to improve their economic standing and the economic status of Tamaki.

## Foundation

- 21 Foundational to the success of TTP and therefore included in the evaluation are culture, place and infrastructure. Instruments for describing culture, place and infrastructure need to be identified and developed.

## Using the outcomes framework

- 22 The outcomes framework provides a mechanism for the evaluation team in collaboration with TTP to map activities over a specific time frame. This will provide a basis for assessing the extent to which TTP has constructed a logical and robust “results chain”. The assessment of the results chain will include the allocation of resources, the choice of activities and the consequences of implementation that will progress TTP toward the successful fulfilment of agreed objectives.
- 23 The outcomes framework is used to define critical baseline data that needs to be collected and analysed for each programme outcome. Developing a template for each programme outcome area enables different types of information to be conceptualised and the relationships between them described in a structured and systematic way.
- 24 The outcomes framework identifies the sets of data required to assess programme outcome achievement and changes that may be attributable to TTP. It provides the basis on which a variety of data collection instruments can be developed to fill in gaps that have been identified. For instance for the TTP evaluation:
- Work has begun on the walkability and accessibility to neighbourhood destination indices for all of Auckland. These indices will allow for the comparison of TTP to other regions within Auckland that are similar in terms of their walkability and accessibility to neighbourhood destinations. Comparisons will also be able to be made with other cities for which these indices have been prepared such as Waitakere, Northcote, Wellington and Christchurch.
  - The indices only assess the accessibility characteristics of neighbourhoods. To assess the quality of the neighbourhood another instrument is being explored, namely the Beacon Neighbourhood Sustainability framework and assessment tool. Discussion is underway with various groups about using this assessment tool.
- 25 Evaluative activity takes place at a number of different levels in relationship to TTP. Specific TTP initiatives have evaluations built in as part of their implementation. The evaluation of TTP as a whole will need to take the results of these initiative specific evaluations into account. It would assist the evaluation team if the initiative specific evaluations related explicitly to the outcomes framework. If this is not possible then if the evaluators could at least be mindful of the outcomes framework.
- 26 When designing these initiative specific evaluations it would be helpful if the evaluators used data sets that have been identified as part of the outcomes framework. It would be also be helpful if the information collected complemented existing research. The data which these specific evaluation use need to be drawn from sources that are available to all the partners to TTP and are of a consistent quality. One of the criticisms of TTP in the foundational period was that different agencies were working from different data sets and consequently at cross purposes.

Initially this was addressed with the completion of the Community Profile (October 2007). The outcomes framework provides a schema with which all evaluations and research linked to TTP can work.

## **Representing the outcomes framework diagrammatically**

27 The following sections represent the outcomes framework with a high level broad brushstrokes diagram. This is followed with a template filled in for each of the programme outcome areas:

- Transforming families to be healthy, confident and active in determining their own future
- Creating a safe, secure and connected community
- Open up sustainable job/training opportunities
- Transforming education
- Transforming housing, neighbourhood and the environment.

# Overview of outcomes

**Tamaki - a place where people thrive and prosper for generations, a place with a strong and vibrant community spirit, valued for its natural beauty and history**

A healthy, attractive mixed urban environment that builds upon Tamaki's diversity and heritage

A confident and creative community that generations love to call home

People who enjoy great social, health and economic outcomes and can access all the opportunities Auckland has to offer

A place of opportunity, enterprise and a prosperous economy

Transforming families to be healthy, confident and active in determining their own future

Creating a safe, secure, and connected community

Open up sustainable job / training opportunities

Transforming education

Transforming housing, neighbourhood and the environment

Existing administrative / research data, and perceptions of Tamaki Residents

**Tamaki Transformation Programme outcomes, as experienced by the people of Tamaki**

Increased awareness and use of primary healthcare services	Increased pride and engagement with the community	Increased employment leading to higher incomes	Increased participation in early childhood services and schools	Houses are affordable and meet the needs of families
Reduction in potentially avoidable hospitalisations	Reduced crime and fear of crime	Early focus on careers and employment among young people	Increased educational achievement	Improved accessibility and quality of amenities and public spaces
...	...	...	...	...

Service provision	Self-determination and Participation	Economy
-------------------	--------------------------------------	---------

<b>Culture</b> Embracing Tamaki's diverse cultures	<b>Place</b> Homes are well maintained and support healthy families	<b>Infrastructure</b> Accessibility and quality of community amenities	Transport, water, telecommunications and energy supply meet Tamaki's needs
---	--	---	--

In-scope for the evaluation

Vision

Long-term outcomes

Programme outcomes

Indicators

'On the ground' reality for Tamaki residents

Contributing factors

Foundation

**Programme outcome**

**Transforming families to be healthy, confident and active in determining their own future**

**Self determination**

**Participation**

- TTP is co-designed and co-led
- Local representation on DHBs
- Locally run trusts / community providing high quality services

**Economy**

- Median income in Tamaki raised to that of the Auckland region

**Indicators**

- Increased enrolment and use of primary health services, decreased use of secondary and tertiary health services, perceptions of Tamaki residents and health professionals) [1]
- Increased immunisation rates, and Well Child checks and follow up appointments, including hearing, sight and dental (various health datasets tbd.) [2]
- Decrease in rates of preventable diseases, intentional injuries and maltreatment (hospitalisation rates, perceptions of Tamaki residents and health professionals) [1,4]
- Decrease in rates of CYF notifications

**'On the ground' reality for people in Tamaki**

- Increased awareness and use of primary health services by families and young people [1]
- Reduction in potentially avoidable hospitalisations (preventable diseases, intentional injuries and maltreatment) [1,4]
- Increased focus on early intervention for families and young people [3]
- Increased participation in sports and recreation activities [5,6]

**Service provision**

- Work and Income: ensure full and correct entitlement; community link way of working for some clients
- HNZC: ensure match between housing and the needs of families
- CYF:
- PHO/DHB/Hospitals: education about preventable diseases; needs assessment and service provision
- Police:

**Place**

- House condition: improved condition of HNZC and private rental housing
- Accessibility: accessibility to neighbourhood amenities and town centre (public spaces, transport, libraries, health services, education, river and wahi tapu, etc.)
- Quality: of neighbourhood amenities and town centre (public spaces, transport, libraries, health services, education, river and wahi tapu, etc.)

- Understanding the history of the place
- Understanding of genealogy and family history
- Language acquisition
- Sense of belonging

**Culture**

- Water, energy, waste management, transport and telecommunications meet the needs of Tamaki residents

**Infrastructure**

*Contextual factors beyond the scope of the programme (for example population trends)*

**Programme outcome**

**Creating a safe, secure, and connected community**

**Self determination**

**Participation**

- TTP is co-designed and co-led
- Community engagement during major development projects

**Economy**

- Median income in Tamaki raised to that of the Auckland region

**Indicators**

- Increased pride and social connectedness within the Tamaki community (perceptions of Tamaki residents) [1,2,3,4]
- Increased use of neighbourhood amenities and public spaces (perceptions of Tamaki residents) [1,2,3,4]
- Neighbourhood amenities and public spaces are accessible by people of all abilities (accessibility index, perceptions of Tamaki residents) [1,3,8]
- Crime and fear of crime reduced to national average (crime statistics, perceptions of Tamaki residents) [5]

**'On the ground' reality for people in Tamaki**

- Increased pride in the community and place among Tamaki residents [1,2,3,4]
- Increased community engagement and participation among Tamaki residents [1,2,3,4]
- Service delivery becomes more integrated, targeted and place based [5,6,7]
- Reduced crime [5]
- Tamaki residents feel safer in their homes and neighbourhoods [5]

**Service provision**

- Work and Income: ensure full and correct entitlement; community link way of working for some clients
- Police:
- Auckland City Council:

**Place**

- Accessibility: streets and public spaces form a network of well designed and safe thoroughfares
- Street profile: streetscape review and improvements, focusing on safety and attractiveness

- Church groups
- Marae

**Culture**

- Transport meets the needs of Tamaki residents

**Infrastructure**

**Contextual factors beyond the scope of the programme (for example population trends)**

**Programme outcome**

**Open up sustainable job/training opportunities**

**Self determination**

**Participation**

- Local people recruited for local jobs [5,6,7]
- Local business development

**Economy**

- Local labour market has sufficient capacity to meet increased need for employment
- Increased private investment in the Tamaki region stimulating employment [6]
- Development of local industry partnerships

**Indicators**

- Median income in Tamaki raised to that of the Auckland region [3]
- Reduced unemployment in the region (whether moving into part-time or full-time work) (MSD administrative data [1,2])
- Increased Maori and Pacific people employed in the health workforce
- Increased numbers of beneficiaries and students supported into work experience, on-the-job training, or employment [1,2]
- Increased take-up of business start-up grants (Work and Income) [5,6,7]

**'On the ground' reality for people in Tamaki**

- Increased employment in the region, with residents working in sustainable jobs that relate to their passions, talents and income aspirations [1,2]
- Increased average household income [3,4]
- Early focus on careers and employment: Tamaki college students are supported to identify career aspirations; development of a service academy at Tamaki College
- Participation and achievement in training that contributes to career development

**Service provision**

- Work and Income: beneficiaries supported into meaningful employment, beneficiaries receiving their full and correct entitlement [4], community link way of working for some clients
- HNZC: Provision of income related rent, employment of local workers for new builds and maintenance of existing properties
- PHO/DHB/Hospitals:
- Tamaki College: Focus on career and employment aspirations

**Place**

- Accessibility: access to neighbourhood amenities, town centre, and work/training destinations
- Quality: of neighbourhood amenities, town centre, and work/training destinations

- Stronger links to surrounding industrial area, the University of Auckland, the Tamaki Innovation Precinct & Auckland Manukau Eastern Transport Initiative

**Culture**

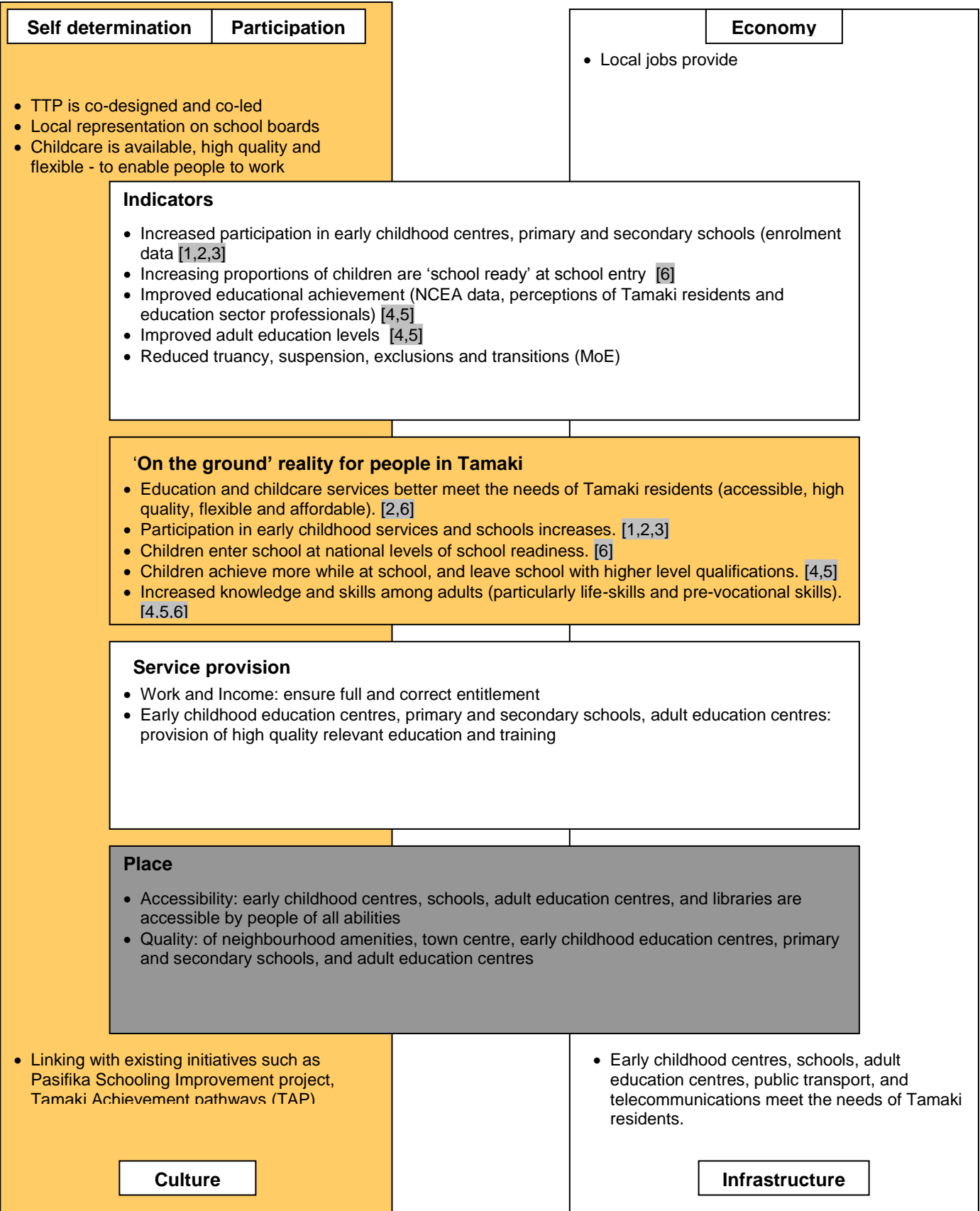
**Infrastructure**

- Transport (roads and rail) and telecommunications meet the needs of Tamaki residents

*Contextual factors beyond the scope of the programme (for example population trends)*

**Programme outcome**

**Transforming education**



*Contextual factors beyond the scope of the programme (for example population trends)*

**Programme outcome**

**Transforming housing, neighbourhood and environment**

**Self determination**

**Participation**

- TTP is co-designed and co-led
- Community engagement during major development projects
- Local people are recruited for local jobs
- Increased home ownership

**Economy**

- Public / private investment partnerships established
- Access to good quality credit

**Indicators**

- Improved access to neighbourhood destinations and amenities, including the river and local wahi tapu (accessibility index, perceptions of Tamaki residents) [1,2,3,5,6,7]
- Improved quality of neighbourhood destinations and amenities, including the river and local wahi tapu (streetscape index, perceptions of Tamaki residents) [1,2,3,5,6,7]
- House condition: Improved condition of HNZC and private rental accommodation (house condition scales, perceptions of Tamaki residents) [1,2,3,4]

**'On the ground' reality for people in Tamaki**

- Increased diversity in suppliers of affordable social and open market homes [1,2,3]
- Increased quality of HNZC and private rental accommodation [3,4]
- Increased quality of neighbourhoods, town centres and the local environment [1,2,3,5,6,7]
- Houses match the needs of their occupants [1,2]
- Increased utilisation of neighbourhood destinations and amenities, including the river and local wahi tapu [1,2,3,5,6,7]

**Service provision**

- HNZC ↔ Auckland City Council: land transfers to make better use of public spaces
- HNZC: Modernisation of existing properties; new builds to meet the needs of the community; provision of income related rent
- Work and Income: ensure full and correct entitlement; community link way of working for some clients
- Energy, water, telecommunications providers: Utilities meet the needs of Tamaki residents

**Place**

- Accessibility: streets and public spaces form a network of well designed and safe thoroughfares
- Quality: neighbourhood renewal initiatives; redevelopment of public spaces
- Street profile: streetscape review and improvements, focusing on safety and attractiveness

- Access to and quality of the area surrounding the river
- Access to and quality of local wahi tapu
- Parks and other public outdoor spaces

**Culture**

- Availability of affordable public transport
- Water, energy and waste management systems meet the needs of Tamaki residents
- Infrastructure is sustainable

**Infrastructure**

*Contextual factors beyond the scope of the programme (for example population trends)*



## **Source documents for the programme outcomes**

### **Transforming families to be healthy, confident and active in determining their own future**

1. Healthy Housing Pilot Evaluation
2. Workstream document – School Readiness
3. CAB Min (07) 22/17
4. Health Status of HNZC Applicants and Tenants: Key Indicators 2004-2008
5. Value proposition
6. Workstream document - Place Making

### **Creating a safe, secure, and connected community**

- 1 CAB Min (07) 22/17
- 2 POL Min (08) 8/15
- 3 Community Renewal Outcomes Evaluation
- 4 An Economic Analysis of Housing Interventions
- 5 Value Proposition
- 6 Workstream Document – Co-Design and Co-Leadership: Achieving Better Outcomes Through Better Ways of Working
- 7 Healthy Housing Outcomes Evaluation
- 8 Workstream Document – Place Making.

### **Open up sustainable job/training opportunities**

- 1 Value Proposition
- 2 An Economic Analysis of Housing Interventions
- 3 Healthy Housing Baseline Research in Taita and Naenae (Part 1)
- 4 Healthy Housing Outcomes Evaluation
- 5 CAB Min (07) 22/17
- 6 POL Min (08) 8/15
- 7 Workstream Document – Safe, Healthy and Attractive Neighbourhoods

### **Transforming education**

- 1 CAB Min (07) 22/17
- 2 Value Proposition
- 3 Healthy Housing Baseline Research in Taita and Naenae (Part 1)
- 4 An Economic Analysis of Housing Interventions
- 5 POL Min (08) 8/15
- 6 Workstream Document – Early Childhood Education

### **Transforming housing, neighbourhood and environment**

- 1 CAB Min (07) 17/22
- 2 POL Min (08) 8/15
- 3 Workstream Document – Safe, Healthy and Attractive Environments
- 4 Healthy Housing Outcomes Evaluation
- 5 Value Proposition
- 6 Workstream Document – Place Making
- 7 Community Renewal Outcomes Evaluation.

## Appendix 1: Programme outcomes areas by data source, availability and gaps

### OUTCOME AREA: EDUCATION

Outcome Indicator	Source	Data available	Data needs collecting
Improved educational participation and achievement	An Economic Analysis of Housing Interventions	Secondary Student Participation, Community Profile for the Tamaki Transformation Project p 16-18  Student Achievement (NCEA) Community Profile for the Tamaki Transformation Project p 13-15	
Children enter school at national levels of school readiness	Workstream Document – Early childhood education	Census of school-aged children	Survey of school readiness in children at school entry
Increased participation of parents and children in early childhood education	CAB Min (07) 22/17  Value Proposition  Healthy Housing Baseline Research in Taita and Naenae (Part 1)	Rate of Early Education Participation, Community Profile for the Tamaki Transformation Project p 12	
Educational and child care services become more accessible to the Tamaki community.	Value Proposition  Workstream Document – Early childhood education	Census of pre-school population  Inventory of Services available, Community Profile for the Tamaki Transformation Project p 11	
Increased achievement of parents in knowledge and skills supporting positive child development.	Workstream Document – Early childhood education	Adult education levels, Community Profile for the Tamaki Transformation Project p 18	

**OUTCOME AREA: LABOUR MARKET PRODUCTIVITY**

<b>Outcome Indicator</b>	<b>Source</b>	<b>Data available</b>	<b>Data needs collecting</b>
Improved labour forces status of residents	Value Proposition  An Economic Analysis of Housing Interventions	Labour force status, Community Profile for the Tamaki Transformation Project p 19  Unemployment Rate, Community Profile for the Tamaki Transformation Project p 20	
Increased local business initiatives with potential to provide jobs and wealth locally and across the region identified and developed	CAB Min (07) 22/17  Workstream Document – Safe, healthy and attractive neighbourhoods	Industry profile, Community Profile for the Tamaki Transformation Project p 20-21	
Increased individual and household income	Healthy Housing Baseline Research in Taita and Naenae (Part 1)	Income source, Community Profile for the Tamaki Transformation Project p 22	
Increased number of beneficiaries receiving their full benefit entitlement	Healthy Housing Outcomes Evaluation	Benefit profile, payments and debt, Community Profile for the Tamaki Transformation Project p 23-25	

**OUTCOME AREA: HEALTH AND DISABILITIES**

<b>Outcome Indicator</b>	<b>Source</b>	<b>Data available</b>	<b>Data needs collecting</b>
Increased focus on early intervention for families and young people particularly around health	CAB Min (07) 22/17	Growing-up in NZ antenatal data	
Increase in children receiving health checks to identify possible health issues or special needs such as hearing, sight and dental checks	Workstream Document – Early childhood education	Child Mortality under 1 and under 5 years.	Need to identify source
Health, sports and recreational services become more accessible to the Tamaki community.	Value Proposition Workstream Document – Place-making		Research needed (may be available from SPARC)
Reduction in potentially avoidable hospitalisations	Healthy Housing Outcomes Evaluation Health Status of HNZN Applicants and Tenants: Key indicators 2004-2008	Hospitalisation Rates, Community Profile for the Tamaki Transformation Project p 29 Health Status of HNZN Applicants and Tenants: Key indicators 2004-2008	
Initial increase and subsequent reduction in Primary Health care visits	Healthy Housing Pilot Evaluation		Need to identify source

## OUTCOME AREA: HOUSING, NEIGHBOURHOOD AND ENVIRONMENT

Outcome Indicator	Source	Data available	Data needs collecting
Increased supply of affordable, social and open market homes	CAB Min (07) 22/17  Workstream Document – safe, healthy and attractive neighbourhoods	Census of dwellings including HNZN housing stock, Community Profile for the Tamaki Transformation Project p 26-27  New Builds	
Increase in the variety, quality, affordability and flexibility of housing and tenure to support a range of household sizes, ages and incomes	CAB Min (07) 22/17	Tenure types, Community Profile for the Tamaki Transformation Project p 28  House condition survey – RENTEL administration data	
Improved Corporation housing by implementing: <ul style="list-style-type: none"> <li>• Modernisation</li> <li>• Healthy Housing Programme</li> <li>• Decrease in overcrowding</li> </ul>	Workstream Document – safe, healthy and attractive neighbourhoods  Healthy Housing Outcomes Evaluation	Healthy Housing RENTEL administrative data  Health Status of HNZN Applicants and Tenants: Key indicators 2004-2008	
Environmental enhancement and inclusion of sustainability principles: <ul style="list-style-type: none"> <li>• Appropriate infrastructure including collective work at the neighbourhood scale on issues of transport, water management, energy systems, and waste management</li> <li>• Open place upgrades</li> <li>• Improvements and ongoing management of parks and reserves</li> <li>• Develop a network of safe, well-designed streets and reserves</li> <li>• Reconnecting to the Tamaki River</li> </ul>	Workstream Document – safe, healthy and attractive neighbourhoods  Value Proposition  Workstream Document – Place-making  CAB Min (07) 22/17  Community Renewal Outcomes Evaluation	New Zealand Transport Survey  Neighbourhood Access to Community Resources (GIS mapping)	Auckland City Council  Land Information New Zealand

**OUTCOME AREA: SAFETY AND SECURITY**

<b>Outcome Indicator</b>	<b>Source</b>	<b>Data available</b>	<b>Data needs collecting</b>
Increased pride in the diverse Tamaki community and cohesion within it	CAB Min (07) 22/17  Community Renewal Outcomes Evaluation  An Economic Analysis of Housing Interventions	Random Household Survey 2005	Qualitative research
Service delivery becomes more integrated, targeted and place based	Value Proposition  Workstream Document – Co-Design and Co-Leadership: achieving better outcomes through better ways of working  Healthy Housing Outcomes Evaluation		Qualitative research
Families are well-connected and active within their neighbourhoods and communities	Workstream Document – Families are Strong and Well Supported  Healthy Housing Outcomes Evaluation  Community Renewal Outcomes Evaluation		Qualitative research
Enhanced safety and security of neighbourhood: <ul style="list-style-type: none"> <li>• Using CEPTED principles</li> <li>• People of all abilities are able to move easily around the neighbourhood and can access key destinations</li> </ul>	Workstream Document –safe, healthy and attractive neighbourhoods  Workstream Document – Place-making	RENTEL administration data  Neighbourhood Access to Community Resources (GIS mapping)	Qualitative research

and facilities	CAB Min (07) 22/17 Community Renewal Outcomes Evaluation		
Reduced crime and fear of crime to national levels	Value Proposition	Total Crime, Community Profile for the Tamaki Transformation Project p 33-34	

## **Appendix 2: Tamaki Transformation Programme Two Year Foundational Framework**